

Width: 70'
Depth: 63'

Whiddon B

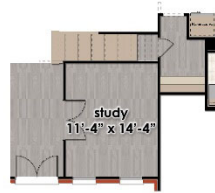
Heated Area: 3,910
4 or 5 bedrooms
3 1/2 or 4 1/2 baths



Front Elevation



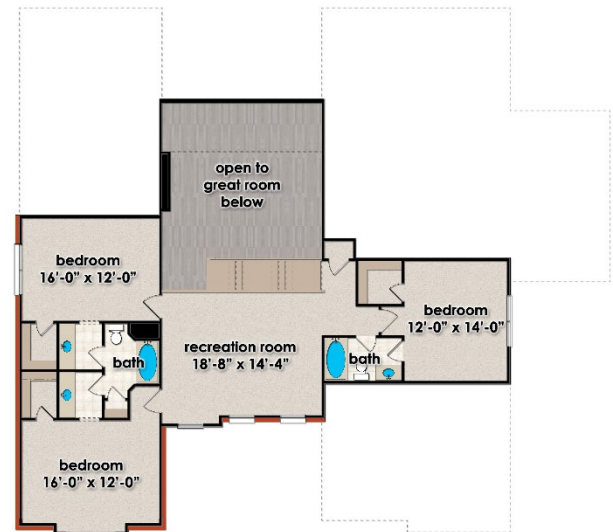
Main Level Floor
2,648 sf



Version C



Version B



Upper Level Floor
1262 sf

for illustrative purposes only. design and prices are subject to change. reproduction without permission is prohibited.

3058 Leeman Ferry Road
Suite G
Huntsville, Alabama 35801



Phone: 256.564.5960

Website:

www.madisonriverhomesllc.com