

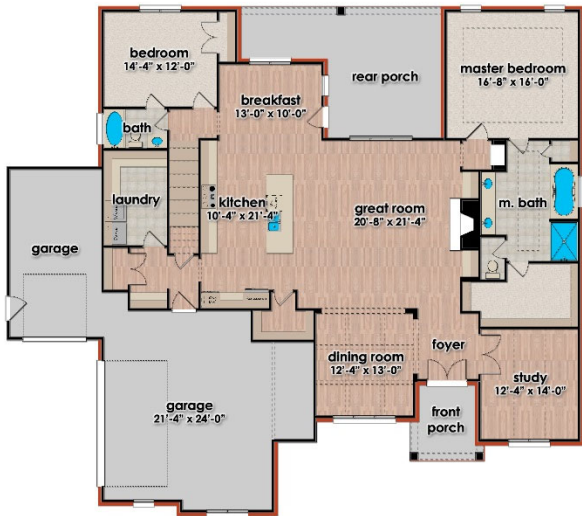
Width: 74'  
Depth: 65'

# Andrew

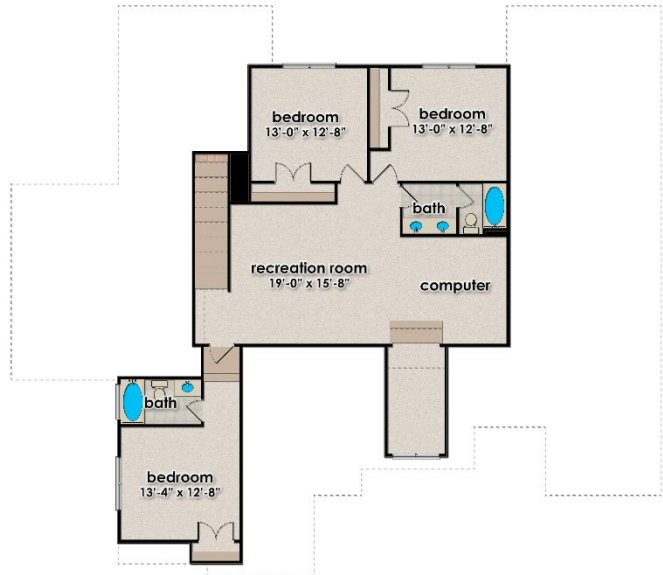
Heated Area: 3,965  
4 or 5 bedrooms  
3 or 4 baths



Front Elevation



Main Level Floor  
2,610 sf



Upper Level Floor  
1,355 sf

for illustrative purposes only. design and prices are subject to change. reproduction without permission is prohibited.

3058 Leeman Ferry Road  
Suite G  
Huntsville, Alabama 35801



Phone: 256.564.5960  
Website:  
[www.madisonriverhomesllc.com](http://www.madisonriverhomesllc.com)